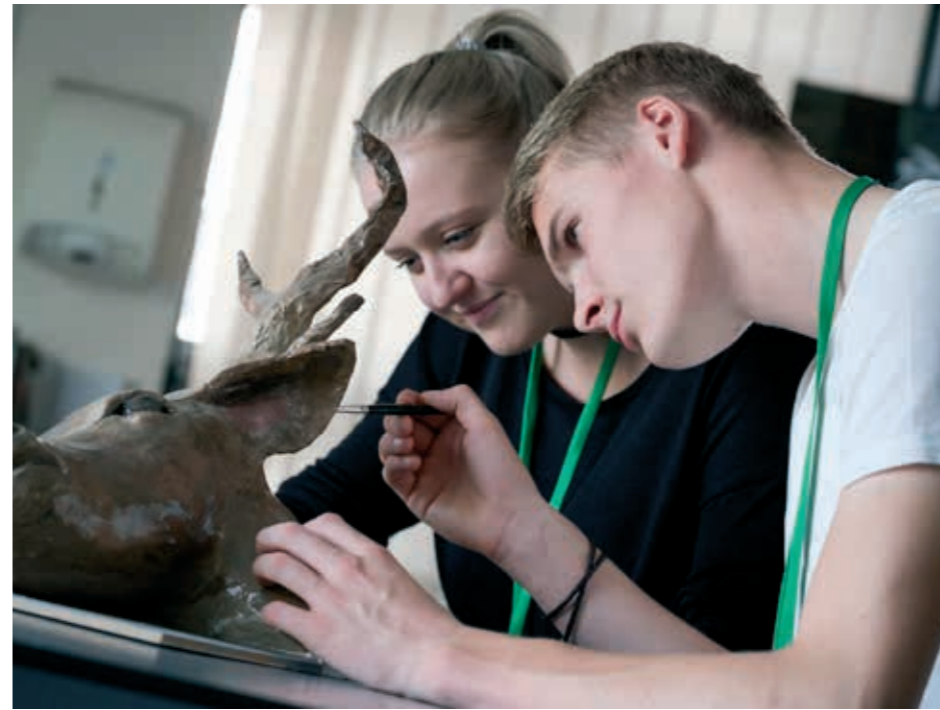




LAWNSWOOD SCHOOL AND RALPH THORESBY SCHOOL SIXTH FORM PARTNERSHIP

2017/18 PROSPECTUS





[In Sixth Form] students make progress that exceeds the national average and learner aims, success rates and retention rates all compare favourably with the national and local averages.

Ofsted, November 2013

A WARM WELCOME

Welcome to Lawnswood School and Ralph Thoresby School Sixth Form Partnership. We are delighted that you are considering joining us for the next stage of your education and hope this prospectus will help you make a decision about what to study and how we can support you.

Our partnership is well established with both sixth form leadership teams working collaboratively to ensure the individual needs of students are met. Together we offer a broad, balanced and engaging curriculum which takes the best elements from both schools, to create a unique post 16 experience, with a proven record of success.

We are very proud of our Sixth Form which offers students the opportunity to study a range of A levels and vocational equivalents in a dynamic and supportive environment. We have an outstanding success rate with 100% of applicants gaining a place at university after studying with us. Over 20% of our students go on to study at prestigious Russell Group universities. Our results are consistently strong with high proportions of students reaching the

top grades (and positive value added performance across both centres). Both schools have also recently been graded 'Good' by Ofsted.

Alongside our websites and open evening, this prospectus will give you a flavour of studying within the Sixth Form Partnership and the options available. We are committed to offering a combination of academic challenge and support which will enable you to successfully progress into higher education, employment or further training. Our specialist information, advice and guidance is tailored to suit the needs of each individual and our dedicated team of tutors and mentors work with you to ensure your success.

Our academic record reflects high quality teaching in the Sixth Form. Pastoral care is strong across the partnership and effectively supports both academic and personal success. In addition, our broad enrichment programme will ensure you are fully equipped for the next stage of your career. Students relish the opportunity to meet new people and broaden their horizons, while still retaining the support they

have grown accustomed to in their 'home' school. Students relish the opportunity to meet new people and broaden their horizons, while still retaining the support they have grown accustomed to in their 'home' school.

Should you wish to visit the Sixth Form Partnership, please see the information at the back of this prospectus. It will be a pleasure to show you around and answer any questions you may have. Finally, we would like to take the opportunity to wish students all the best in your forthcoming examinations.



Mrs Jo Bell
Headteacher,
Lawnswood



Mr Will Carr
Headteacher,
Ralph Thoresby

WORKING IN PARTNERSHIP

Working in partnership allows us to offer an impressive selection of tailored study programmes, meaning that every student can pursue their interests and prepare themselves for the future.

Across both sites, highly specialised and experienced teaching will provide access to lessons, that are designed to support outstanding progress within lessons and across the two academic years. Teachers will stretch every student and provide challenge. Our regular feedback helps students overcome their misconceptions and ensures they meet and exceed the high targets we, as a partnership, set our students.

Each student develops an extended professional network across a joint sixth form of more than 300 learners. A collaborative approach to learning is enhanced by a wide variety of enrichment opportunities including our 'Get Set for Sixth Form' visit to London and study trips including New York City, Brussels and Paris. Students will be given the chance to take on leadership roles to shape our Sixth Form Partnership and will be supported in pursuing extra-curricular opportunities on either site.

Working in partnership allows us to offer a unique multi-campus experience, providing students the chance to access state of the art facilities across the two sites.



COURSES AND REQUIREMENTS

Ensuring study programmes provide appropriate challenge and prepares you for the next steps in your career is our first priority in inducting every student. A professional discussion during Year 11 will ensure that students receive guidance that is individualised to their needs.

Note: Entry requirements are subject to change. Current entry requirements can be found at www.ucasprogress.com

Qualification	Subject	Entry Requirements
A-Level	Art	4+ GCSE Art
A-Level	Art Textiles	4+ GCSE Textiles and/or 4+ GCSE Art
A-Level	Biology	5,5 in two sciences and 5+ in maths
A-Level	Economics	5+ GCSE English and 6+ GCSE Maths
A-Level	Chemistry	5,5 in two sciences and 5+ in maths
A-Level	Computing	5+ GCSE Maths and 5+ GCSE Computer Science
A-Level	Drama & Theatre Studies	4+ GCSE Drama or successful audition piece
A-Level	D&T-Product Design	4+ GCSE Resistant Materials, Graphics or Product Design
A-Level	English Language	5+ GCSE English Language
A-Level	English Literature	5+ GCSE English Language and 5+ English Literature
A-Level	English Language and Literature	5+ GCSE English Language
A-Level	French	5+ GCSE French and 5+ GCSE English Language
A-Level	Further Maths	8+ GCSE Maths
A-Level	Geography	5+ GCSE English Language
A-Level	History	5+ GCSE English Language
A-Level	Law	6+ in English Language
A-Level	Maths	7+ GCSE Maths
A-Level	Music	5+ GCSE Music
A-Level	Photography	5+ GCSE English Language
A-Level	Physics	5,5 in two sciences and 5+ in maths
A-Level	Psychology	5+ GCSE English and 6+ GCSE Maths and Science
A-Level	Religious Studies	5+ GCSE English Language
A-Level	Sociology	5+ GCSE English Language
A-Level	Spanish	5+ GCSE Spanish and 5+ GCSE English Language
L3 BTEC	Child Development	4+ GCSE English Language and/or Maths and a Level 2 qualification in a related subject. (Science or Health and Social Care).
L3 AQA Certificate	Applied Science	5+ GCSE English Language and Maths and 4+ GCSE Science
L3 BTEC	Business	4+ GCSE English Language and/or Maths and a Level 2 qualification in a related subject.
L3 BTEC	Health & Social Care	4+ GCSE English Language and/or Maths and a Level 2 qualification in a related subject. (Science or Health and Social Care).
L3 BTEC	ICT	5+ GCSE English Language and/or Maths and a Level 2 qualification in a related subject.
L3 BTEC	Sport	4+ GCSE English Language and/or Maths and a Level 2 qualification in a related subject.
L3 OCR Cambridge National	Digital Media	4+ GCSE English Language



Sixth form students make outstanding progress in vocational courses because of high quality teaching.

Ofsted, March 2015

GENERAL ENTRY REQUIREMENTS

05

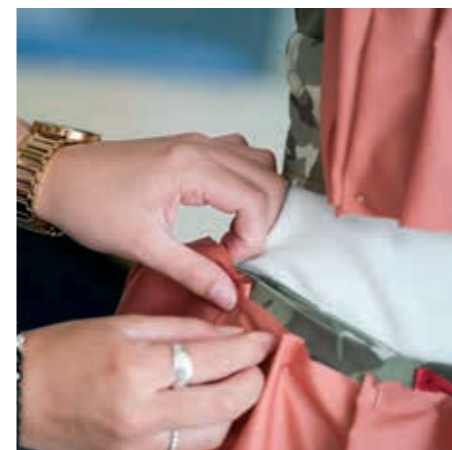
Typically, we ask that students achieve a minimum of 5 GCSEs at Grade 4 or above. Students who have not achieved a minimum of Grade 4 in English and maths will undertake guided learning to achieve these essential qualifications. Students must have normally achieved at least a grade 4 in English or maths in order to study in the sixth form.

Students will undertake a study programme with a minimum of 540 hours of guided learning each year.

AS examinations will not be taken in any course taken after September 2017.

Regular assessments will be taken ahead of formal A-Level examinations and where appropriate, students will receive additional support if assessment results show they have fallen below their trajectory to achieve the aspirational targets we set.

Level 3 vocational qualifications (Most commonly BTECs) are equivalent in value to A-Level qualifications but have a greater focus on regular completion of portfolio work. The majority of university courses and employers welcome a broad programme of study.





Teaching in the sixth form is consistently strong and no teaching was observed that was less than good. This good teaching enabled students to learn independently and take responsibility for their own progress.

Ofsted, November 2013

EFFECTIVE STUDENT SUPPORT

Being part of the highly successful Partnership gives our students access to a network of experts who will work tirelessly to ensure that students successfully graduate to the next stage of their career. Our Sixth Form leadership team includes a range of highly trained and experienced staff who collaborate to ensure our students achieve their aspirations.

Academic leaders work with our students to help them capitalise on their skills. They will guide students in their subject and university/employment choices and are also on hand to provide support to parents/carers.

Heads of Year and Progress Managers build a strong bond with students to help them to make exceptional academic, professional and personal progress.

Tutors/Mentors are members of the extended Sixth Form team and are committed to helping students in developing professional attributes like time management, independent study, file organisation and research.

All members of the Partnership community will have access to independent careers advice from **Independent Careers Advisors**.

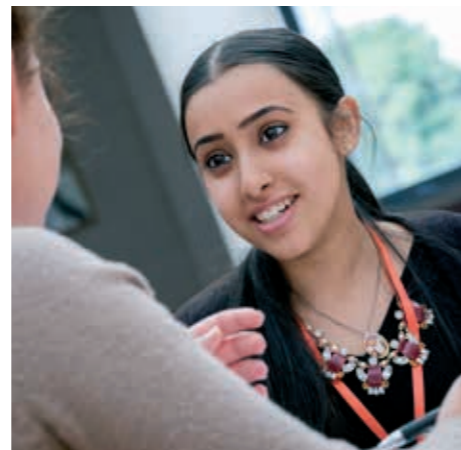
Academic support

Subject teachers are committed to giving the students the potential to meet and exceed their academic targets. Meticulously planned lessons and incisive formative feedback will support students to become exceptional learners of each of their subjects.

Support for applying to Oxford, Cambridge, Medicine, Dentistry and Veterinary Science

We have a strong reputation for supporting students in pursuing their ambitions in higher education.

Our support programmes for selective courses and universities begins from Day 1. Whether it is receiving guidance on appropriate work experience to meet statutory application requirements or developing skills through rigorous mock interviews, you can be certain that the Partnership supports every student in reaching his or her true potential.



ACADEMIC ENRICHMENT

The Extended Project Qualification

The Extended Project Qualification (EPQ) provides a unique opportunity to explore a specific area of academic interest. Selected students will undertake substantial independent research to prepare either an academic report, performance or artefact.

This standalone qualification is worth half an A Level and is graded between A*-E.

Students will benefit from access to academic staff and the libraries at the University of Leeds and will work closely with their research supervisor throughout the process. Completion of the programme provides additional UCAS points and an outstanding source of fascinating discussion at university and employment interviews.

Work Experience

Our strong relationships with local, national and global employers across the public, private and voluntary sectors, enable us to offer a one-week work experience that complements each student's study programme.

Access to Higher Education

Overcoming the daunting process of university applications begins early in Year 12.

Although every student will be given the opportunity to visit a local UCAS exhibition, our work with Leeds-based and national universities gives us the chance to provide students with a unique experience.

In recent years, students have received support to access funded summer schools in Oxford, Cambridge, Durham, Leeds, Bristol, London, Sussex and Edinburgh. There is even the opportunity to apply to explore American university options at Yale University.

Preparing You for Life after School

Students will participate in an exciting 'Enrichment Block' of activities, which will ensure they are equipped for university or independent life. From healthy cooking to banking and finance and from first aid to driver safety, students will leave us with the wealth of skills needed for the diverse pathways they will pursue.



Students have very positive attitudes to their studies and a growing confidence in their ability to succeed.

Ofsted, March 2015

OUTSIDE THE CLASSROOM

Outstanding academic results must be paired with skills and experiences developed outside the classroom. Our impressive extra-curricular offering provides every member of our Partnership community the chance to gain new skills and develop existing ones.

Activities take place during and outside the school day, so whether it's the stage, sports field, classroom or laboratory where students flourish, the Partnership will provide every opportunity to leave Sixth Form with a CV that stands out for all of the right reasons.

Opportunities include:

- Peer and academic mentoring
- Sixth Form leadership roles
- The annual school production
- Music and theatre performances
- Duke of Edinburgh-Gold Award
- LEAP enterprise programme
- Poetry tournament
- Sports teams
- Debating
- The pursuit of literature book clubs
- West Yorkshire Police Explorer Programme
- Leeds Beckett University-Progression Module
- The National Citizenship Service (NCS) programme



APPLICATION PROCESS

09

Open Evenings

Students and their families are warmly invited to meet with subject staff during our special Open Evenings in October and November, providing an opportunity to hear from staff and students about our unique experiences.

Experiencing Sixth Form

External candidates and their families are invited to visit both campuses on a normal working day. Please contact staff at either sixth form to make arrangements.

Applying

All applicants must apply using UCAS Progress on the webpage: www.ucasprogress.com

Internal applicants should apply to their host institution. External applicants are invited to apply to one of our schools. All applicants will have full access to all the facilities and opportunities across both campuses.

Application deadlines vary across both sites and will be advertised via the Sixth Form section of our webpages.

Professional Discussions

Students will be invited to a professional discussion at which we will jointly explore aspirations for your future.

Sixth Form Launch

In July, applicants will be invited to join us at a special launch event to experience the exceptional teaching and learning on offer across the Partnership.

GCSE Results

Students should speak to a member of the Sixth Form team to confirm the suitability of their chosen study programme.

Sixth Form Induction

The start of your exciting future begins now. During your induction, you will meet your tutors and have full access to the facilities and experiences that will help you to excel.

Students participate fully in a wide range of additional opportunities to enrich their studies. As a result, they gain in stature as they progress through the sixth form and are confident, responsible young adults.

Ofsted, November 2013

DAVID ELLIS YEAR 13 2014/15

'I primarily chose to study A levels at Lawnswood Sixth Form because I wanted to continue to receive the excellent support and teaching that I had experienced in Years 7 to 11. Another key factor for me was that the sixth form has a good reputation, being widely regarded as one of the best in Leeds. I think it helps that Lawnswood is just the right size for sixth form, as it allows you to get to know the Sixth Form Leadership Team very closely and allows them to provide personalised care and support, whether it be for UCAS applications or with any problems you may have. Personally, I find this preferable to larger sixth forms as I

feel that during the transition from A levels to university, training or work, is the time when students need the most support. Another important aspect of Lawnswood Sixth Form is that it offers the opportunity to study subjects that aren't available in lower school. For me, this meant the opportunity to study Psychology, a subject that I greatly enjoy, but for others it might mean the opportunity to take Sociology or Law.'

David achieved two A grades in both his French and Maths, he also achieved A*grades in Geography and Psychology. He has since moved to Oxford University to study Experimental Psychology.

NIDA NAQVI YEAR 13 2016/17

'Choosing Ralph Thoresby Sixth Form was easy because of the positive experience I had all the way through my earlier years at the school. I knew that alongside great teaching, I would have some unique experiences. A highlight has been taking part in the Sutton Trust's America Programme, which has allowed me to study at Yale University. Because of this and the excellent support I receive in school, I am now pursuing university options at both sides of the Atlantic. Our Sixth Form allows you to dream big and provides you the tools to succeed.'

Nida is currently working towards her A Levels in Physics, English and French and has applications pending for law at both UK and American institutions. She was recently appointed Head Girl.

Ambition and expectations are high for students and staff.

Ofsted, March 2015

PEN PORTRAITS

HARRY BROWN YEAR 13 2015/16

'I chose to come to Lawnswood Sixth Form because of the UFCA Scholars programme that is linked with the school. The programme has a good reputation so I knew the school that it chose to link with would follow suit. The school has been helpful in allowing us, the football scholars, to tailor our studies around our training which is really good because there is a great balance between the football and the education. For me personally, I was allowed to study History A Level alongside my Extended BTEC in Sport which allowed me to be flexible with my future options and this was something that was really important to me.'

Harry achieved a B in History and a triple distinction* in BTEC Sports Performance and Excellence. He has moved into higher education at one of the prestigious Russell Group universities, studying History at Leeds.

SHOAIB HUSSAIN YEAR 13 2015/16

'If it hadn't been for Ralph Thoresby Sixth Form, I would never have achieved my goal of studying medicine. From my first day, I was stretched and given opportunity after opportunity. I began working with Sheffield University's medical outreach programme and also completed the Realising Opportunities scheme, meaning I had completed two summer schools before I started my final year of study. Although I found elements of my courses hugely challenging, I benefited from the small class sizes and the endless support that teachers here are willing to give.'

Shoaib Hussain achieved A grades in Biology and Economics and a B Grade in Chemistry. He recently began studies at Sheffield University's medical school.



Lawnswood School
Ring Road, West Park
Leeds LS16 5AG
Tel: 0113 284 4020 Fax: 0113 284 4021
Email: school@lawnswoodschool.co.uk
www.lawnswoodschool.co.uk



Ralph Thoresby School
Holtdale Approach,
Leeds LS16 7RX
Tel: 0113 397 9911 Fax: 0113 261 3132
Email: info@ralphthoresby.com
www.ralphthoresby.com
